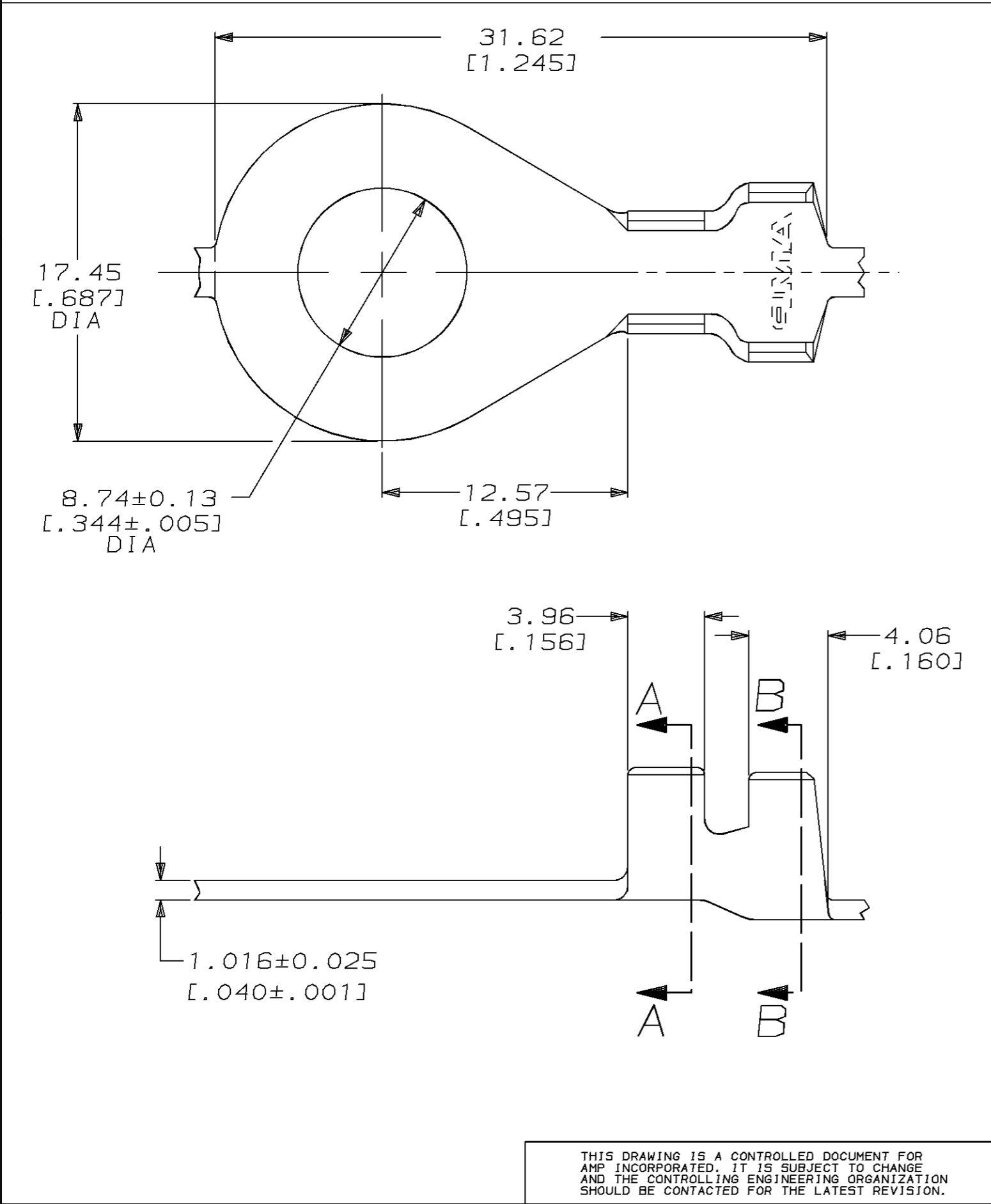
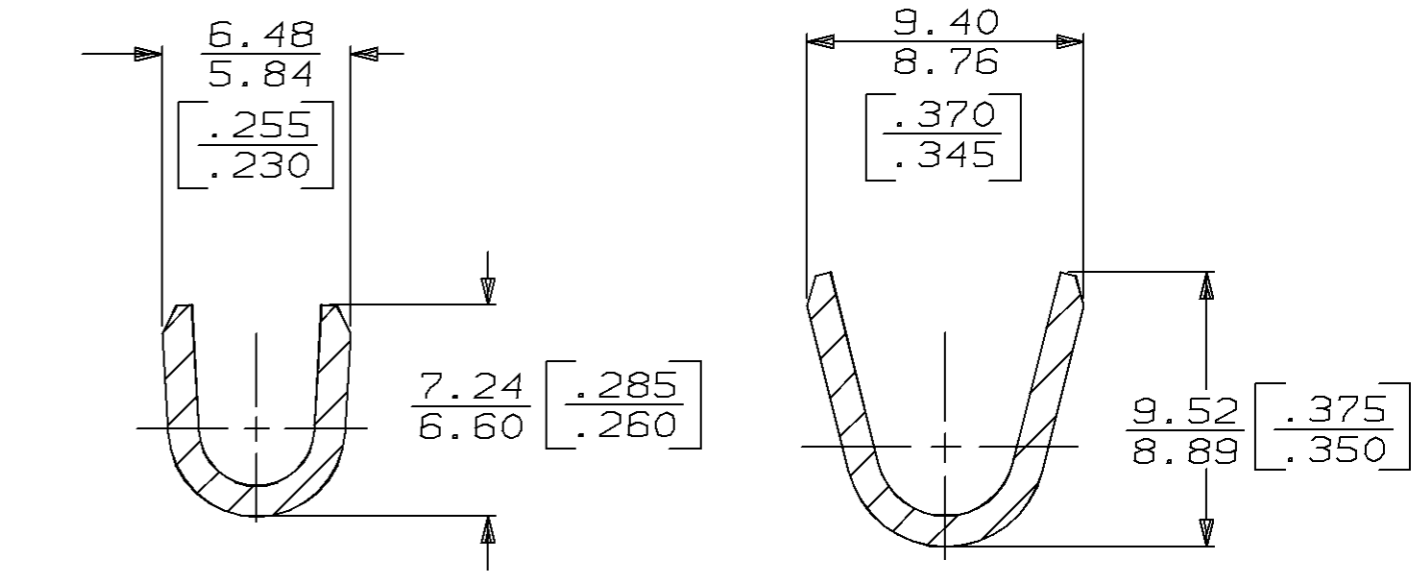


THIS DRAWING IS UNPUBLISHED. RELEASED FOR PUBLICATION, 19  
 © COPYRIGHT 19 BY AMP INCORPORATED. ALL INTERNATIONAL RIGHTS RESERVED.

LOC	DIST	P	F	ZONE	LTR	REVISIONS	DATE	APPD
AF	50				M	REDRAWN PER 0710-0015-96	PF/GY	25/JAN/96



1 CONTINUOUS STRIP ON REEL.



SECTION A-A

SECTION B-B

3.81-5.59 DIA [.150-220]		[12-8] AWG	42946-2
INSULATION RANGE		WIRE RANGE	PART NO
DO NOT SCALE PRINT. UNLESS SPECIFIED DIMENSIONS IN mm [INCHES] TOLERANCES ON: 2 PLC DEC ± 0.25 [.010] 3 PLC DEC ± - ANGLES ± -		<b>AMP</b> AMP Incorporated Harrisburg, PA 17105-3608 NAME <b>RING</b>	
MATERIAL 082 BRASS	DR 25/JAN/96 PHILLIP M FORTNEY CHK 25/JAN/96 JEFF R RUTH APPD 25/JAN/96 GARY N YETTER APPD 25/JAN/96 MARK BARNABA PRODUCT SPEC -	SIZE <b>B</b>	CAGE CODE 00779
FINISH 0.002032 [.000080] MIN TIN PLATE PER MIL-T-10727	APPLICATION SPEC -	DRAWING NO <b>C-42946</b>	SCALE 4:1
WEIGHT -		SHEET	1 OF 1

THIS DRAWING IS A CONTROLLED DOCUMENT FOR AMP INCORPORATED. IT IS SUBJECT TO CHANGE AND THE CONTROLLING ENGINEERING ORGANIZATION SHOULD BE CONTACTED FOR THE LATEST REVISION.

CUSTOMER DRAWING